

OWLS



Life in the Air

Owls usually perch in trees all day and then fly and hunt for food at night.

What helps an owl fly and catch food in the dark?

Look at the list below and put a cross next to the one that an owl does not have.



Sharp ears.



Webbed feet.



Strong claws.



Wings.



Large eyes.

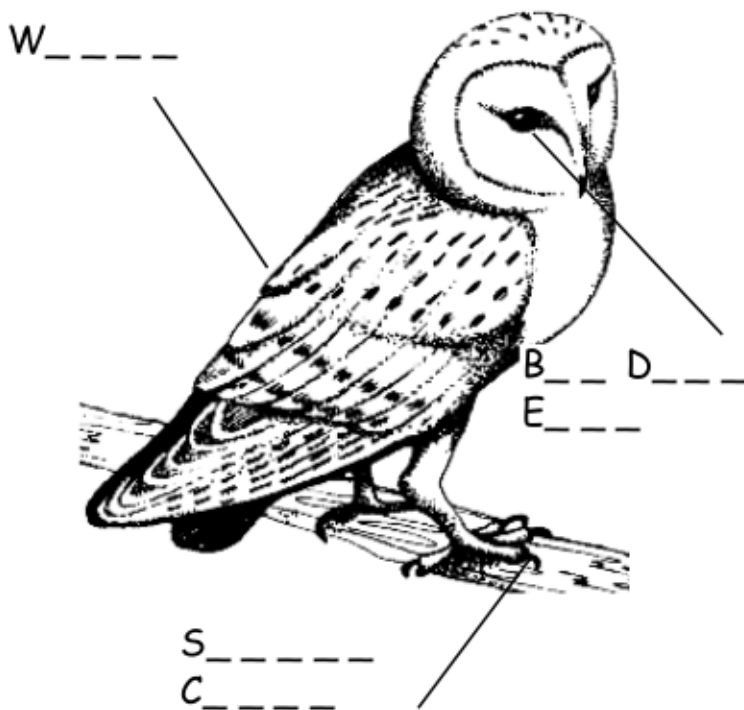


Colour me in

Can you colour the owl in and name three things that help it to fly, catch mice and see in the dark.

Look for

- Wings
- Strong claws
- Big dark eyes



Lunchtime!

Can you help the owl decide what to eat for lunch?

Draw arrows to two things that the owl would prefer to eat for lunch.

Leaves



Mice



Bark



Worms



Voles



Owl Signs

Become an owl detective and look for the signs that owls leave behind.



Owl poo - owls will have favourite trees to sit in and there will often be a pile of white owl poo underneath.

Tawny owl



Owl pellets - owls don't chew their food because they have no teeth. They swallow it whole and then spit out the bits they don't want, like the fur and bones, all squashed together in a pellet.



Feathers - owls moult their feathers in spring and grow new ones.



Owl Poem

Tawny owl
A home in the woods
Wide, soft wings
Never see them
You hear them hoot

Only flies at night
With big dark eyes
Looking for mice

Can you complete this sentence?

Owls are _____



Are you an owl expert?

(Put a circle around the correct answer)

1. Where would an owl live?

A tree A lake Underground



2. What sound does an owl make?

It hoots It barks It grunts



3. What does an owl like to eat?

Mice Insects Leaves



4. What are baby owls called?

Fawns Owlets Cubs



Dot to Dot

Join the dots to complete the owl.

